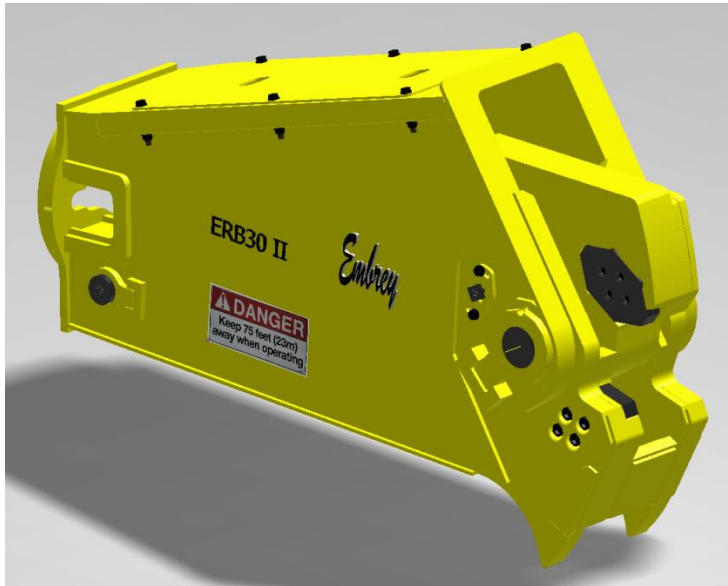


ERB Hydraulic Railbreaker



The *Embrey* ERB30-II Railbreaker is designed for use in the scrap metal and rail service industries for fast, efficient downsizing of rail for recycling, transporting and replacing. It minimises the requirement for oxy torch cutting. It is capable of breaking the large 65kg rail. The replaceable blades have 4 edges which allows for regular rotation to ensure optimum performance.

Specifications

Model	Excavator weight	Attachment weight	Jaw opening	Oil pressure	Oil flow
ERB30-II	22-30t	2400kg	160mm	4000-5000psi	200-270l/m

All specifications are approximate.

Embrey Attachments PL reserves the right to change specifications without notice.